

0533-02/

136

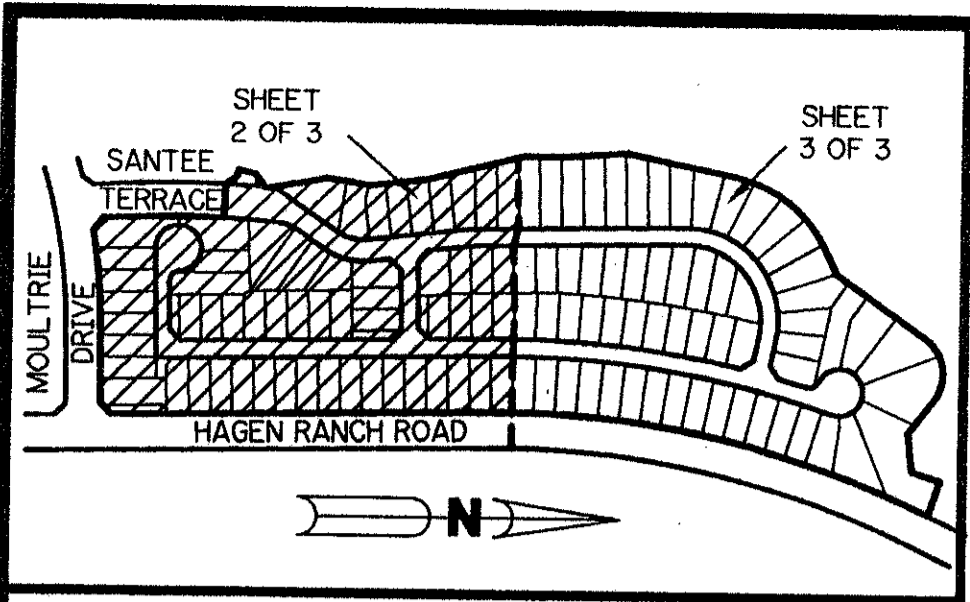
A PART OF LAKE CHARLESTON PLANNED UNIT DEVELOPMENT

LAKE CHARLESTON - TRACT "X"

BEING A REPLAT OF TRACT "X" AND A PORTION OF TRACT "W" AND SANTEE TERRACE, ALL ACCORDING TO THE PLAT OF LAKE CHARLESTON PLAT NO. 3 - P.U.D. AS RECORDED IN PLAT BOOK 62, PAGES 55 THROUGH 68, INCLUSIVE, OF THE PUBLIC RECORDS OF PALM BEACH COUNTY, FLORIDA. SECTION 9, TOWNSHIP 45 SOUTH, RANGE 42 EAST

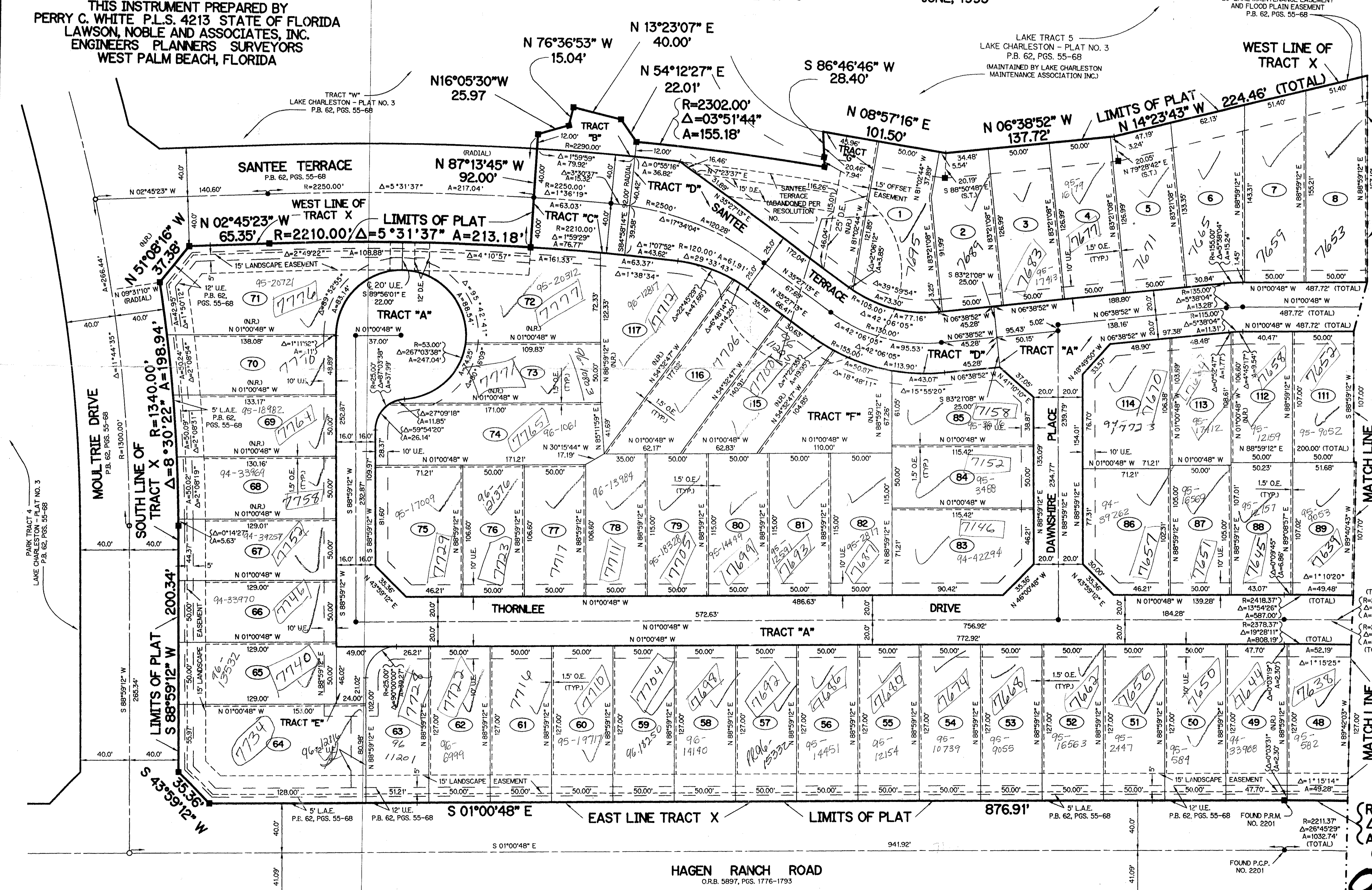
SHEET 2 OF 3

JUNE, 1993



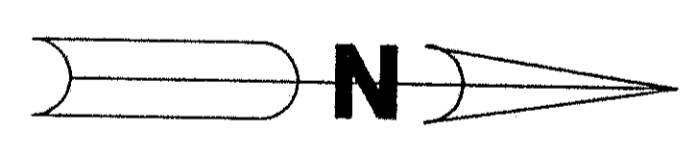
KEY MAP
N.T.S.

THIS INSTRUMENT PREPARED BY
PERRY C. WHITE P.L.S. 4213 STATE OF FLORIDA
LAWSON, NOBLE AND ASSOCIATES, INC.
ENGINEERS PLANNERS SURVEYORS
WEST PALM BEACH, FLORIDA



NOTE: THE FLOOD PLAIN EASEMENT WITHIN THE REAR OF EACH LOT IS SUBJECT TO FLOODING DURING THE THREE YEAR, TWENTY-FOUR HOUR RAIN FALL EVENT.

- LEGEND:**
- - PERMANENT REFERENCE MONUMENT, PLS #4213
 - △ - PERMANENT CONTROL POINT, PLS #4213
 - ∠ - DELTA ANGLE
 - D.E. - DRAINAGE EASEMENT
 - F.E. - FLOOD PLAIN EASEMENT
 - L.A.E. - LIMITED ACCESS EASEMENT
 - L.M.E. - LAKE MAINTENANCE EASEMENT
 - N.R. - NOT RADIAL
 - O.R. - OFFICIAL RECORD
 - O.R.B. - OFFICIAL RECORD BOOK
 - O.S. - OPEN SPACE
 - P.B. - PLAT BOOK
 - P.G.S. - PAGES
 - P.L.S. - PROFESSIONAL LAND SURVEYOR
 - P.U.D. - PLANNED UNIT DEVELOPMENT
 - R - RADII
 - R.O.W. - RIGHT-OF-WAY
 - S.T. - SURVEY TIE LINE
 - U.E. - UTILITY EASEMENT
 - - FOUND P.C.P. # 2001



SCALE: 1" = 40'

PET. 86-96A
ALLOC. #0014
W/ASSGMT. LETTER

(R=2251.37'
Δ=26°45'29"
A=1051.42'
(TOTAL)

0533-02/

LAKE CHARLESTON - TRACT "X" 7/1/96 SHEET 2 OF 3

SUBDIVISION # TRACT X
BOOK 71
PAGE 135
FLOOD ZONE B
QUAD # 49
ZONING RTS
SE 86-96
ZIP CODE 33437
PUB NAME LAKE CHARLESTON

TAZ 439

HAGEN RANCH ROAD
O.R.B. 5897, PGS. 1776-1793

FOUND P.C.P. NO. 2201

FOUND P.R.M. NO. 2201